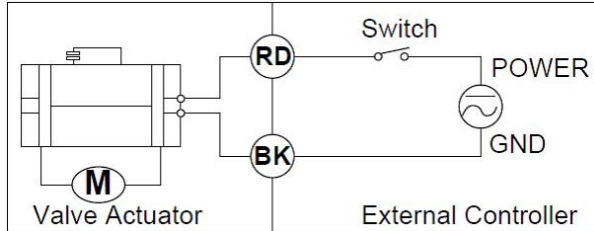




| MODEL | DESCRIPTION |
|-------|--------------------|
| XR-22 | 2 Wire Auto Return |
| XR-33 | 3 Wire Control |

INSTALLATION AND OPERATING INSTRUCTIONS

XR22 Wiring Instructions



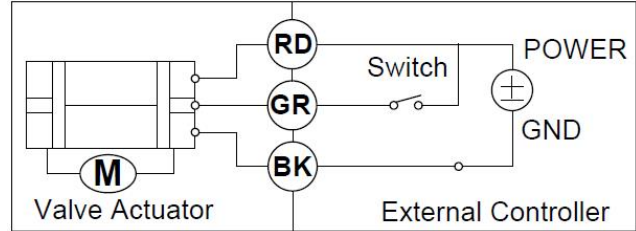
XR22 Wiring Instructions:

Red wire connects to positive + (hot).
 Black wire connects to negative – (neutral).
 Switch/Relay/Controller to be installed in line with the Red wire.

The 2 wire auto return can be connected directly to a simple on/off switch. When the actuator is energized it will fully open. It will remain open until the actuator is de-energized or power is lost.

Nominal power is required to maintain capacitor charge. Without a minimum of 60 seconds powered the capacitor may not maintain enough power to return the valve to the closed position.

XR33 Wiring Instructions



XR33 Wiring Instructions:

Red & Green wires connect to positive + (hot).
 Black wire connects to negative – (neutral).
 Switch/Relay/Controller to be installed in line with the Green wire.

The 3 wire setup utilizes the Green wire to open and close the valve. The Red wire must be continuously energized to close the valve.

Once opened or closed the actuator will not continue to draw power due to an internal cut off. If a power loss occurs the valve will remain in its current position.

Answers to Common Questions:

1. Does the actuator require continuous power to hold position?

No, however the auto-return model will draw a negligible amount of power to keep the capacitor charged.

2. Can these valves be installed outdoors?

Although the actuators feature an enclosed splash resistant, watertight housing they are not recommended to be installed outdoors without a cover or enclosure.

3. Can this valve operate manually?

The valve is not designed to be manually operated however in the event of an emergency the actuator can be removed and the ball turned into position. This is not recommended as it may damage the valve and void any warranties.

4. Will the valve close in the event of a power failure?

Only auto-return valves are designed to automatically close when power is removed or there is a power failure.

5. Does this valve work in both directions?

Yes, unlike standard solenoid valves these ball valves are bi-directional and will flow in either direction

6. What is the correct mounting position?

The valve is recommended to be installed with the actuator up. This is especially the case in applications with a high degree of vibrations.